



Independent Protection Co., Inc.

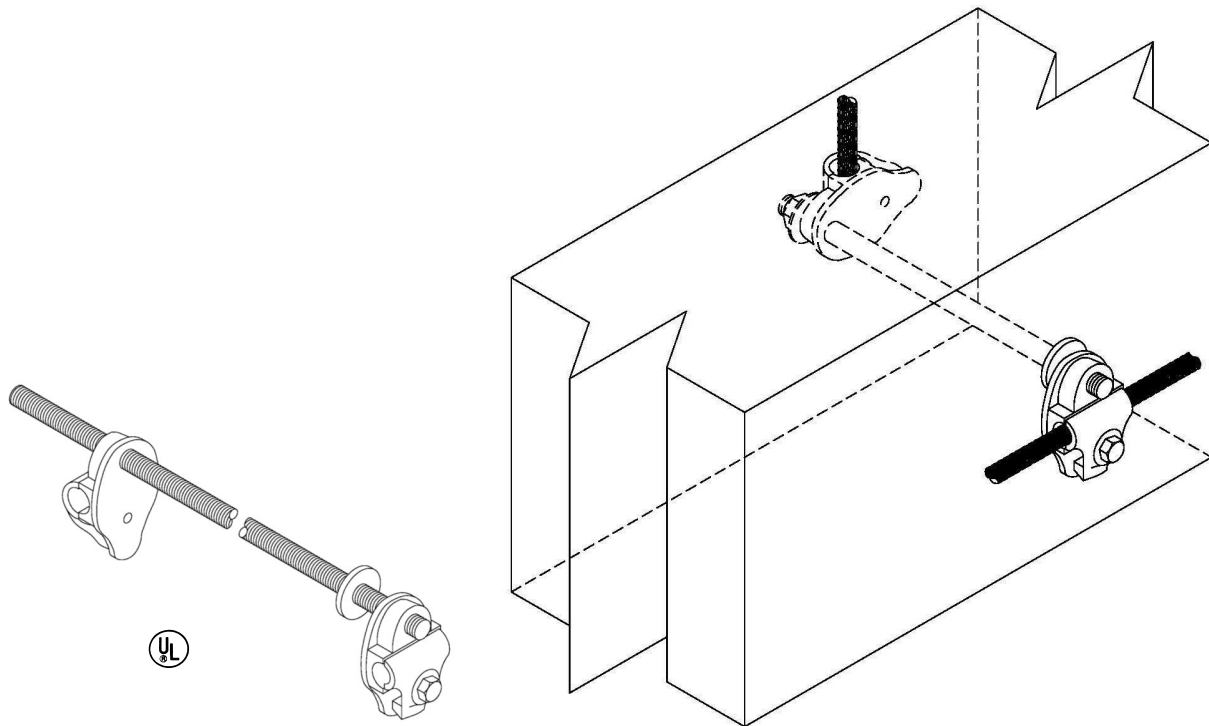
1607 South Main St.
Goshen, IN. 46526

574.533.4116 or 1.800.860.8388

Fax: 574.534.3719

info@ipclp.com www.ipclp.com

UL Listing No. E10913



272X Thru-Wall Connector

Cast bronze assembly includes two bronze cable connectors, 1/2" x 12" stainless steel threaded rod, Neoprene® washer, hex nut and washer. Longer lengths of thread rod available upon request. Wt. 1.78 lbs. each.

22	28S	32S	40	21	GS	A22	A28	A30
----	-----	-----	----	----	----	-----	-----	-----